

RoHS Compliant Product
A suffix of "-C" specifies halogen & lead-free

FEATURES

- High Current Capability
- High Surge Current Capability
- Low Reverse Current

MECHANICAL DATA

- Case Material: Molded Plastic. UL Flammability Classification Rating 94V-0
- Terminals: Lead Free Plating (Tin Finish). Solderable per MIL-STD-202, Method 208
- Polarity: Cathode Band

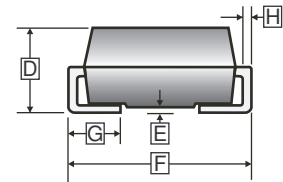
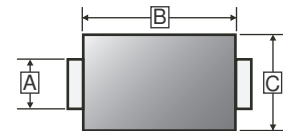
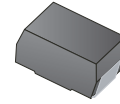
PACKAGE INFORMATION

Package	MPQ	Leader Size
SMA	5K	13 inch

ORDER INFORMATION

Part Number	Type
SK360A-C	Lead (Pb)-free and Halogen-free

SMA



REF.	Millimeter		REF.	Millimeter	
	Min.	Max.		Min.	Max.
A	1.23	1.65	E	-	0.3
B	3.99	4.75	F	4.80	5.28
C	2.30	2.90	G	0.75	1.52
D	1.90	2.62	H	0.15	0.31

Cathode  Anode 

ABSOLUTE MAXIMUM RATINGS ($T_A=25^\circ\text{C}$ unless otherwise specified)

Parameter	Symbol	Ratings	Unit
Maximum Repetitive Peak Reverse Voltage	V_{RRM}	60	V
Maximum RMS Voltage	V_{RMS}	42	V
Maximum DC Blocking Voltage	V_{DC}	60	V
Maximum Average Forward Rectified Current	I_F	3	A
Peak Forward Surge Current, 8.3ms single half sine-wave superimposed on rated load	I_{FSM}	20	A
Typical Thermal Resistance	$R_{\theta JC}$	40	$^\circ\text{C/W}$
Operating Junction and Storage Temperature Range	T_J, T_{STG}	125, -55~150	$^\circ\text{C}$

ELECTRICAL CHARACTERISTICS

Parameter	Symbol	Typ.	Max.	Unit	Test Conditions
Maximum Instantaneous Forward Voltage @25 $^\circ\text{C}$	V_F	0.37	-	V	$I_F=1\text{A}$
		0.44	-		$I_F=2\text{A}$
		-	0.54		$I_F=3\text{A}$
Maximum DC Reverse Current @Rated DC Blocking Voltage	I_R	-	0.5	mA	$T_A=25^\circ\text{C}$
		-	20		$T_A=100^\circ\text{C}$
Typical Junction Capacitance ¹	C_J	160	-	pF	

Note:

1. Measured at 1MHz and applied reverse voltage of 4V D.C.

RATINGS AND CHARACTERISTIC CURVES

FIG. 1-Typical Forward Current Derating Curve

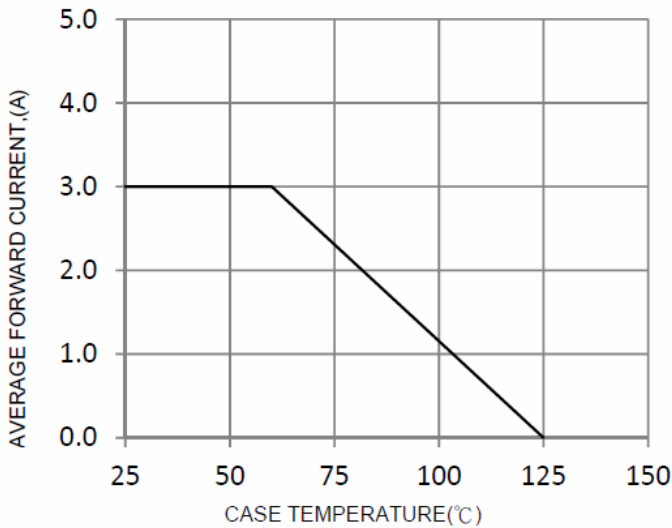


FIG. 2-Typical Forward Characteristics

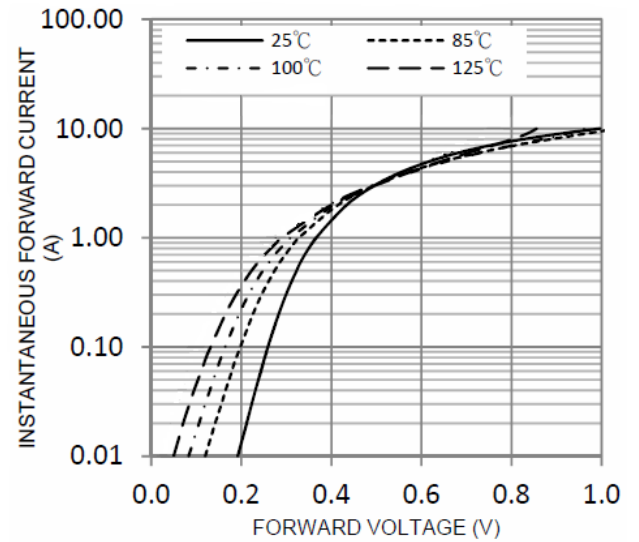


FIG. 3-Maximum Non-Repetitive Forward Surge Current

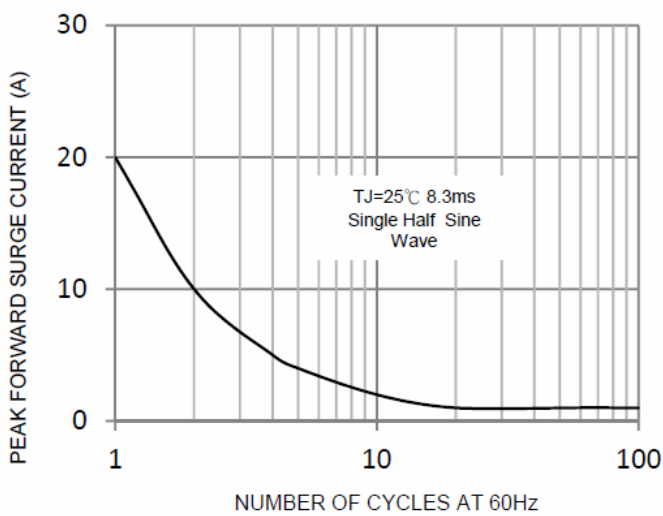


FIG. 4-Typical Reverse Characteristics

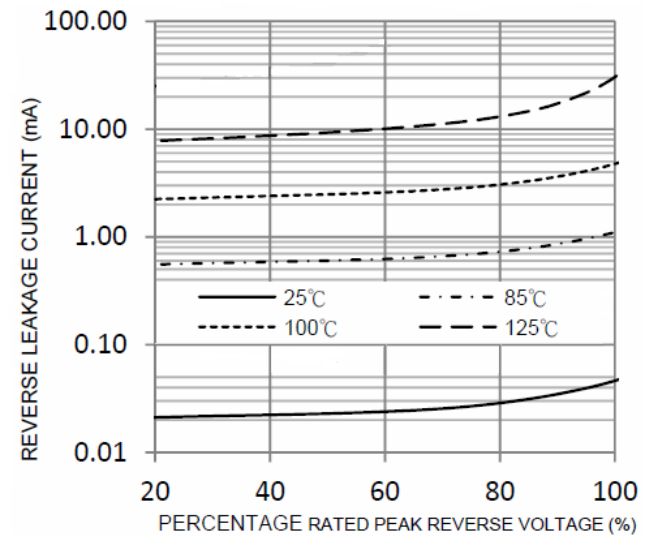


FIG. 5-Typical Junction Capacitance

