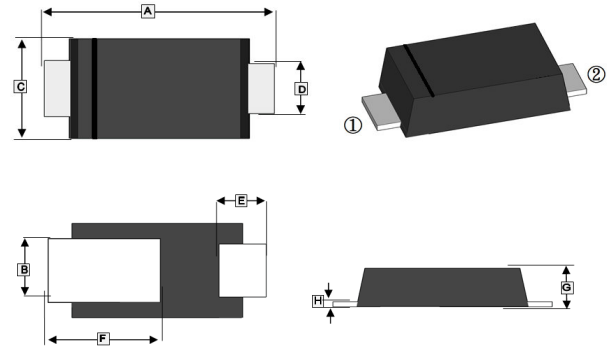


RoHS Compliant Product
A suffix of "-C" specifies halogen & lead-free

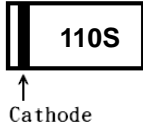
FEATURES

- Low V_F Schottky Barrier Diodes
- Very Low Profile-Typical Height of 0.65 mm
- Low Forward Voltage Drop
- Moisture Sensitivity: Level 1, per J-STD-020
- High Temperature Soldering Guaranteed: 260°C/10s

SOD-323WT



MARKING



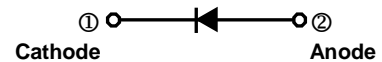
PACKAGE INFORMATION

| Package | MPQ | Leader Size |
|-----------|-----|-------------|
| SOD-323WT | 15K | 13 inch |

| REF. | Millimeter | | REF. | Millimeter | |
|------|------------|------|------|------------|------|
| | Min. | Max. | | Min. | Max. |
| A | 2.30 | 2.70 | E | 0.40 | 0.75 |
| B | 0.75 | 1.00 | F | 1.10 | 1.50 |
| C | 1.20 | 1.40 | G | 0.60 | 0.73 |
| D | 0.55 | 0.75 | H | 0.10 | 0.25 |

ORDER INFORMATION

| Part Number | Type |
|-------------|---------------------------------|
| SM1100WT-C | Lead (Pb)-free and Halogen-free |



MAXIMUM RATINGS AND ELECTRICAL CHARACTERISTICS ($T_A=25^\circ\text{C}$ unless otherwise specified.)

| Parameter | Symbol | Rating | Unit |
|--|-----------------|---------|--------------------|
| Maximum Recurrent Peak Reverse Voltage | V_{RRM} | 100 | V |
| Maximum RMS Voltage | V_{RMS} | 70 | |
| Maximum DC Blocking Voltage | V_{DC} | 100 | |
| Maximum Average Forward Rectified Current | I_F | 1 | A |
| Peak Forward Surge Current, 8.3ms Single Half Sine-wave Superimposed on Rated Load | I_{FSM} | 25 | A |
| Maximum Instantaneous Forward Voltage @ $I_F=1\text{A}$ | V_F | 0.8 | V |
| Maximum DC Reverse Current @Rated DC Blocking Voltage | I_R | 20 | μA |
| Typical Junction Capacitance @4V, 1MHz | C_J | 28 | pF |
| Typical Thermal Resistance from Junction-Ambient ¹ | $R_{\theta JA}$ | 82 | $^\circ\text{C/W}$ |
| Typical Thermal Resistance from Junction-Lead ¹ | $R_{\theta JL}$ | 6 | |
| Operating Junction and Storage Temperature Range | T_J, T_{STG} | -55~150 | $^\circ\text{C}$ |

Notes:

1. The thermal resistance from junction to ambient or lead, mounted on P.C.B with 5x5mm copper pads, 2OZ, FR4 PCB.

RATINGS AND CHARACTERISTIC CURVES

Figure 1. Forward Current Derating Curve

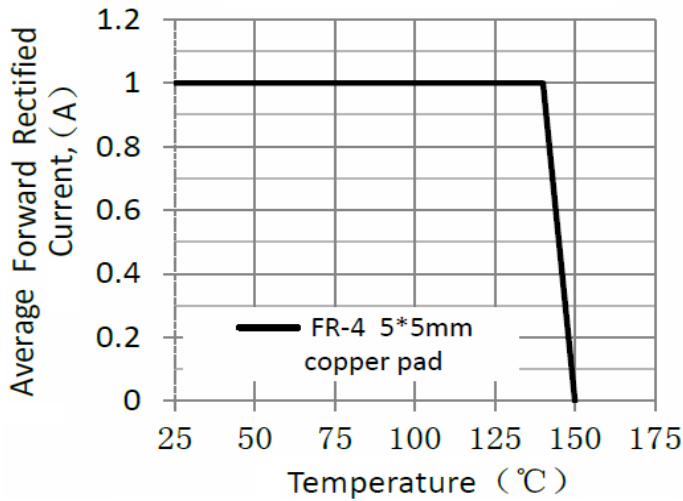


Figure 2. Typical Instantaneous Forward Characteristics

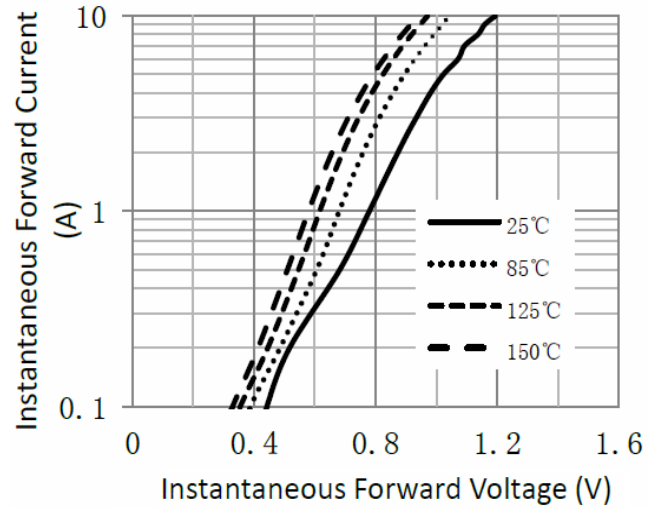


Figure 3. Typical Reverse Characteristics

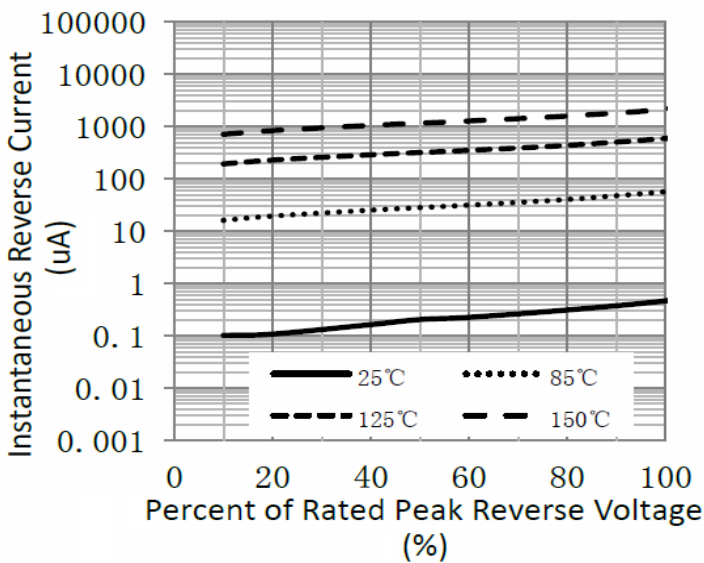


Figure 4. Typical Junction Capacitance

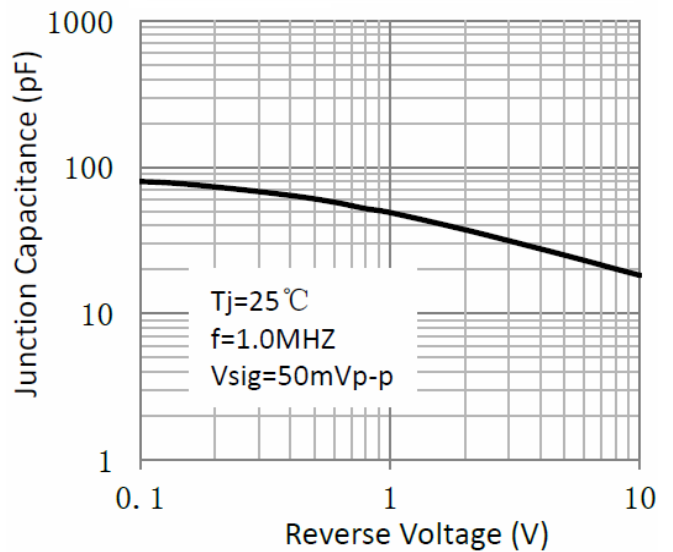


Figure 5. Maximum Non-Repetitive Peak Forward Surge Current

